

1. Specification & Dimension

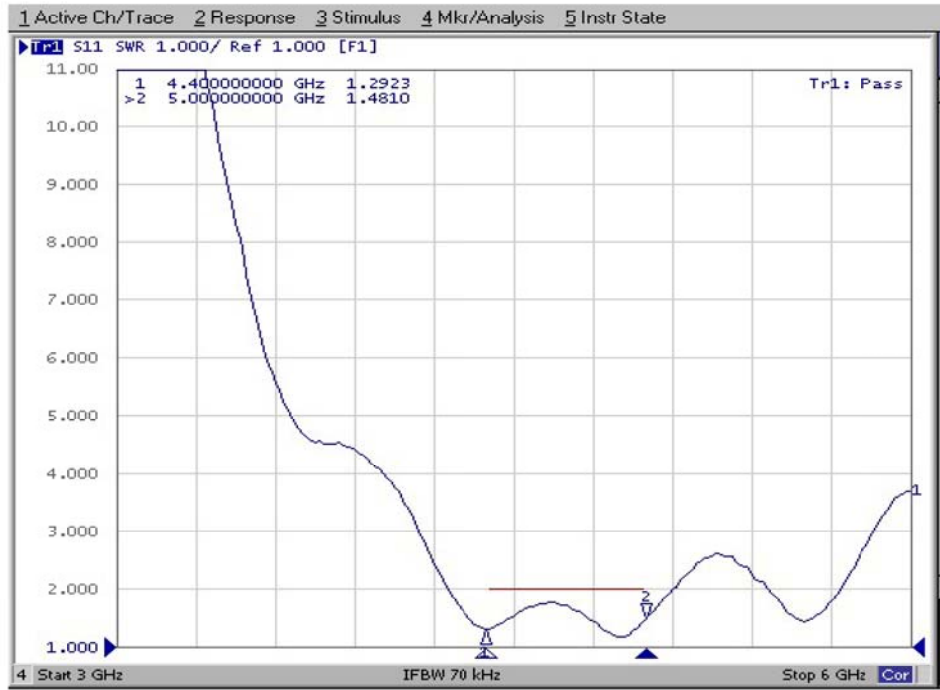
		F	E	D	C	B	A																																								
					REV ZONE	DESCRIPTION	ECN NO.	ENG	APPROVED	DATE																																					
1																																															
2																																															
3																																															
3		<table border="1"> <thead> <tr> <th colspan="2">Electrical Properties</th> </tr> </thead> <tbody> <tr> <td>Frequency Range</td> <td>4400~5000 MHz</td> </tr> <tr> <td>Impedance</td> <td>50Ω</td> </tr> <tr> <td>V.S.W.R.</td> <td><2.0</td> </tr> <tr> <td>Radiation</td> <td>Directional</td> </tr> <tr> <td>Gain</td> <td>8dBi</td> </tr> <tr> <td>Polarization</td> <td>±45°</td> </tr> <tr> <td>Wave Length . type</td> <td>Patch</td> </tr> <tr> <td>Beam Width(±3dB)</td> <td>50°±5°@E-Plane 70°±5°@H-Plane</td> </tr> <tr> <td>Test Ground Size</td> <td>N/A</td> </tr> </tbody> </table>								Electrical Properties		Frequency Range	4400~5000 MHz	Impedance	50Ω	V.S.W.R.	<2.0	Radiation	Directional	Gain	8dBi	Polarization	±45°	Wave Length . type	Patch	Beam Width(±3dB)	50°±5°@E-Plane 70°±5°@H-Plane	Test Ground Size	N/A																		
Electrical Properties																																															
Frequency Range	4400~5000 MHz																																														
Impedance	50Ω																																														
V.S.W.R.	<2.0																																														
Radiation	Directional																																														
Gain	8dBi																																														
Polarization	±45°																																														
Wave Length . type	Patch																																														
Beam Width(±3dB)	50°±5°@E-Plane 70°±5°@H-Plane																																														
Test Ground Size	N/A																																														
4		<table border="1"> <thead> <tr> <th colspan="2">Mechanical Properties</th> </tr> </thead> <tbody> <tr> <td>Radome Material</td> <td>PBT</td> </tr> <tr> <td>Connector Type</td> <td>N Jack</td> </tr> <tr> <td>IP Level</td> <td>IP-65</td> </tr> <tr> <td>Dimension</td> <td>L=□260±10mm</td> </tr> <tr> <td>Operating Temp.</td> <td>-30℃~+70℃</td> </tr> <tr> <td>Storage Temp.</td> <td>-40℃~+85℃</td> </tr> </tbody> </table>				Mechanical Properties		Radome Material	PBT	Connector Type	N Jack	IP Level	IP-65	Dimension	L=□260±10mm	Operating Temp.	-30℃~+70℃	Storage Temp.	-40℃~+85℃	<table border="1"> <thead> <tr> <th colspan="2">UNLESS OTHERWISE SPECIFIED TOLERANCES ON:</th> <th colspan="2">DRAWN BY: DORIS</th> </tr> </thead> <tbody> <tr> <td>X</td> <td>± 1</td> <td>DESIGNED BY: SARA</td> <td></td> </tr> <tr> <td>XX</td> <td>± 0.5</td> <td>CHECKED BY: KY</td> <td></td> </tr> <tr> <td>XXX</td> <td>± 0.25</td> <td>APPROVED BY: MATT</td> <td></td> </tr> <tr> <td>AVG.</td> <td>± 2σ</td> <td></td> <td></td> </tr> <tr> <td>THIRD ANGLE PROJECTION</td> <td></td> <td></td> <td></td> </tr> </tbody> </table>				UNLESS OTHERWISE SPECIFIED TOLERANCES ON:		DRAWN BY: DORIS		X	± 1	DESIGNED BY: SARA		XX	± 0.5	CHECKED BY: KY		XXX	± 0.25	APPROVED BY: MATT		AVG.	± 2σ			THIRD ANGLE PROJECTION			
Mechanical Properties																																															
Radome Material	PBT																																														
Connector Type	N Jack																																														
IP Level	IP-65																																														
Dimension	L=□260±10mm																																														
Operating Temp.	-30℃~+70℃																																														
Storage Temp.	-40℃~+85℃																																														
UNLESS OTHERWISE SPECIFIED TOLERANCES ON:		DRAWN BY: DORIS																																													
X	± 1	DESIGNED BY: SARA																																													
XX	± 0.5	CHECKED BY: KY																																													
XXX	± 0.25	APPROVED BY: MATT																																													
AVG.	± 2σ																																														
THIRD ANGLE PROJECTION																																															
4		<table border="1"> <thead> <tr> <th colspan="2">MATERIAL:</th> <th colspan="2">TITLE :</th> </tr> </thead> <tbody> <tr> <td>FINISH:</td> <td></td> <td colspan="2">#026 4400~5000MHz MIMO 4X4 Antenna</td> </tr> </tbody> </table>		MATERIAL:		TITLE :		FINISH:		#026 4400~5000MHz MIMO 4X4 Antenna		<table border="1"> <thead> <tr> <th colspan="2">SCALE:1/1:UNIT:mm</th> <th colspan="2">DRAW NO. :</th> </tr> </thead> <tbody> <tr> <td>DATE:2021/3/9</td> <td></td> <td colspan="2">PART NO. : MEKPX-026XNFx9-4X4P-44005000</td> </tr> </tbody> </table>		SCALE:1/1:UNIT:mm		DRAW NO. :		DATE:2021/3/9		PART NO. : MEKPX-026XNFx9-4X4P-44005000				<table border="1"> <thead> <tr> <th colspan="2">REV: A</th> </tr> </thead> </table>		REV: A																					
MATERIAL:		TITLE :																																													
FINISH:		#026 4400~5000MHz MIMO 4X4 Antenna																																													
SCALE:1/1:UNIT:mm		DRAW NO. :																																													
DATE:2021/3/9		PART NO. : MEKPX-026XNFx9-4X4P-44005000																																													
REV: A																																															

2. Test Condition & Report

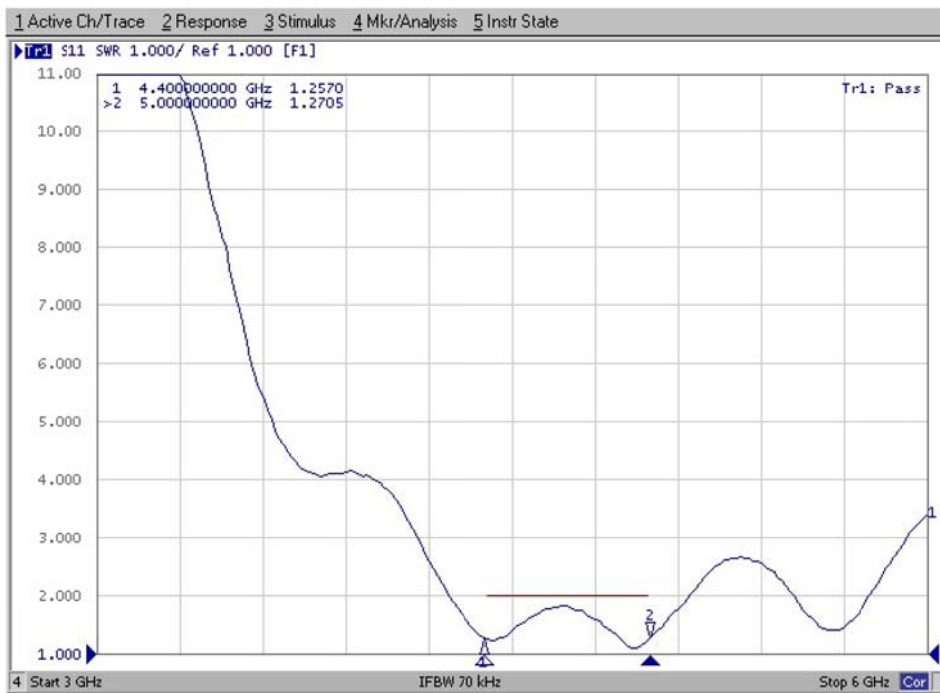
2.1 V.S.W.R

V.S.W.R.

Port 1



Port 2

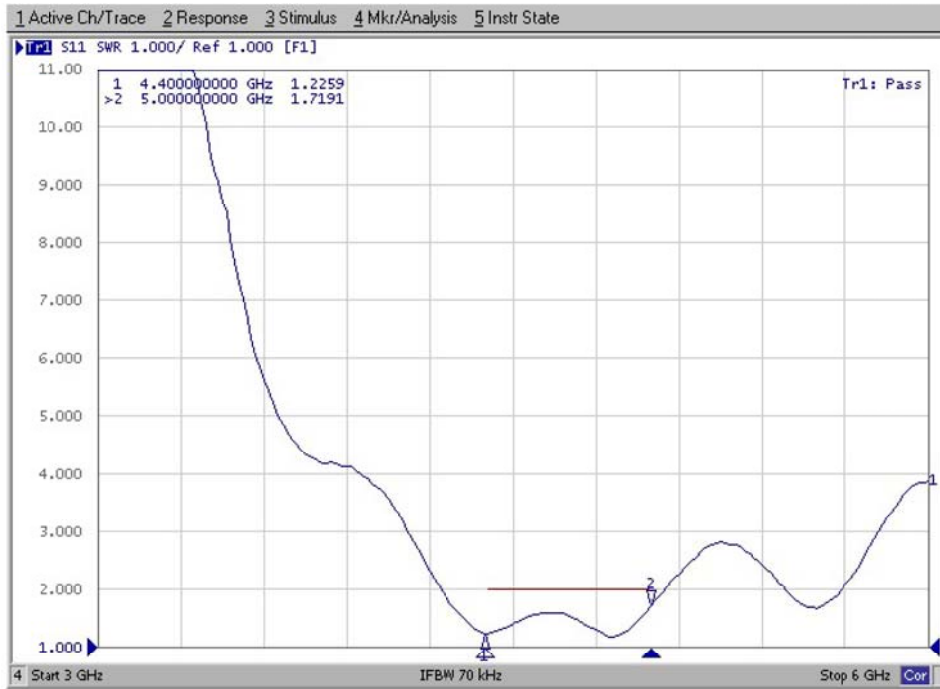


2. Test Condition & Report

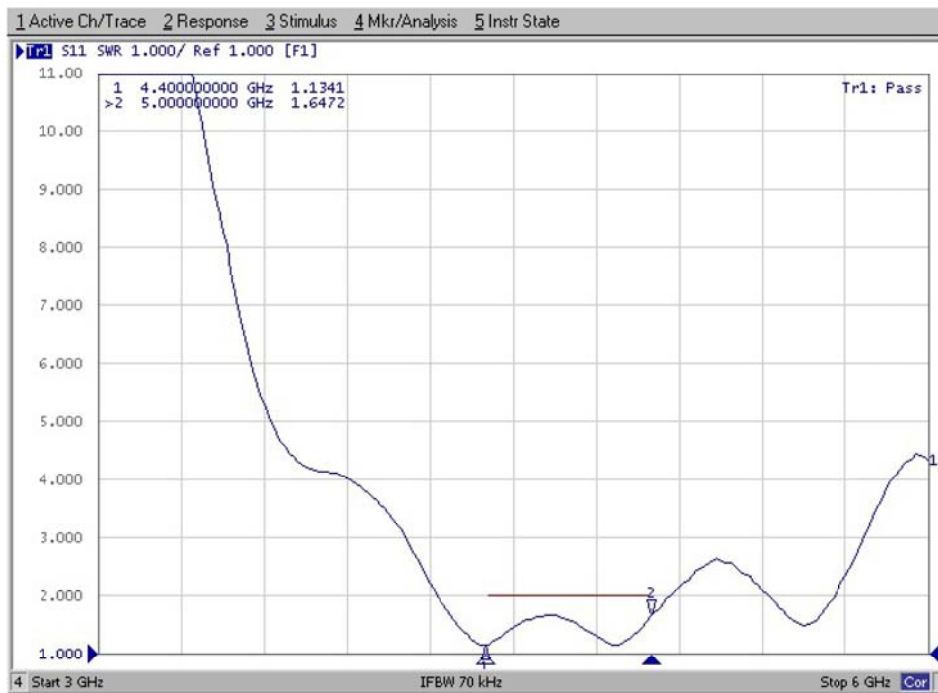
2.1 V.S.W.R

V.S.W.R.

Port 3



Port 4



2. Test Condition & Report

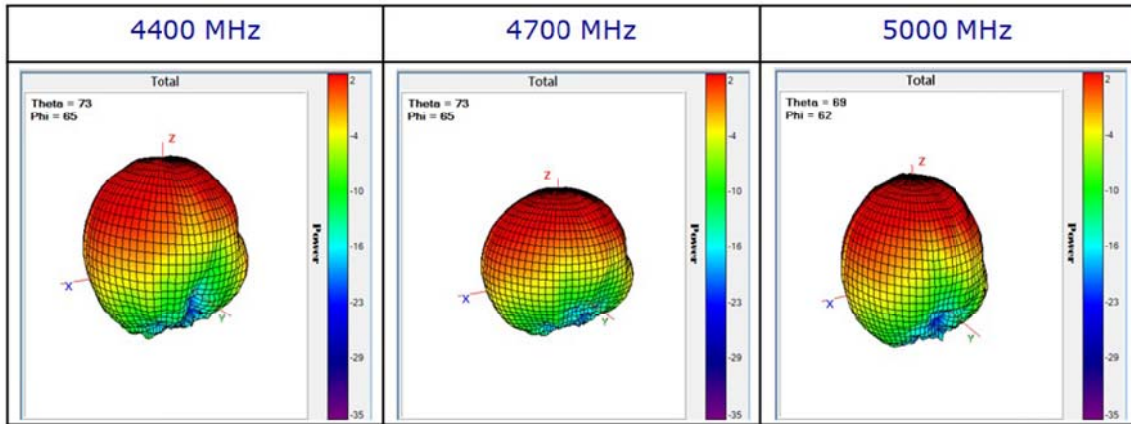
2.1 V.S.W.R

V.S.W.R.

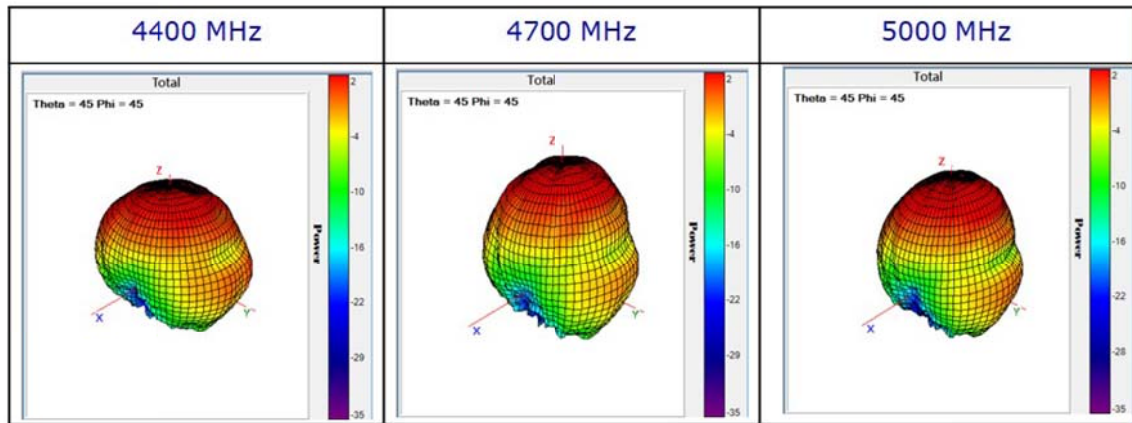


2.2 Pattern

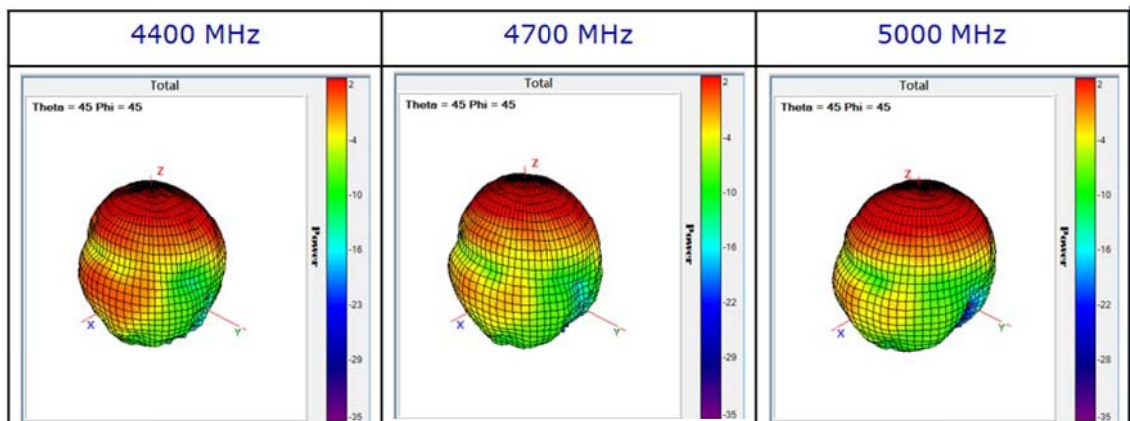
Port 1



Port 2

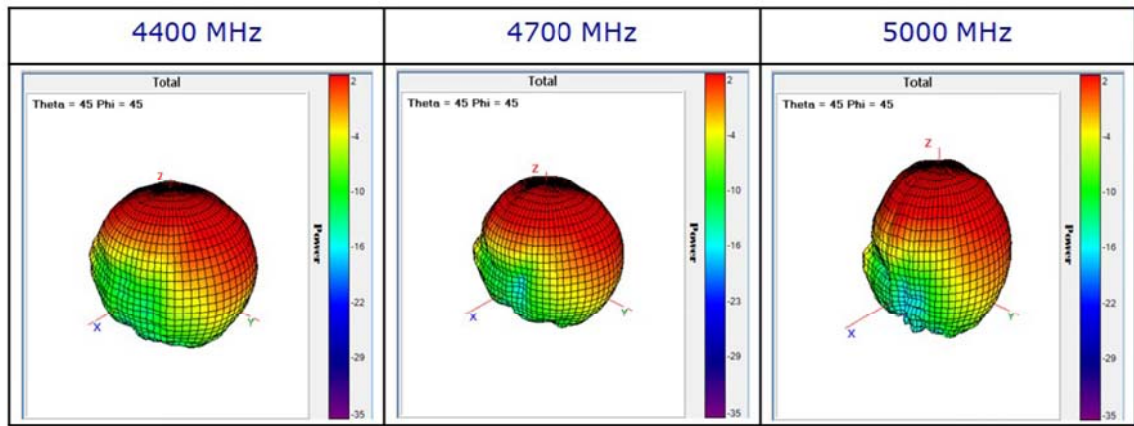


Port 3

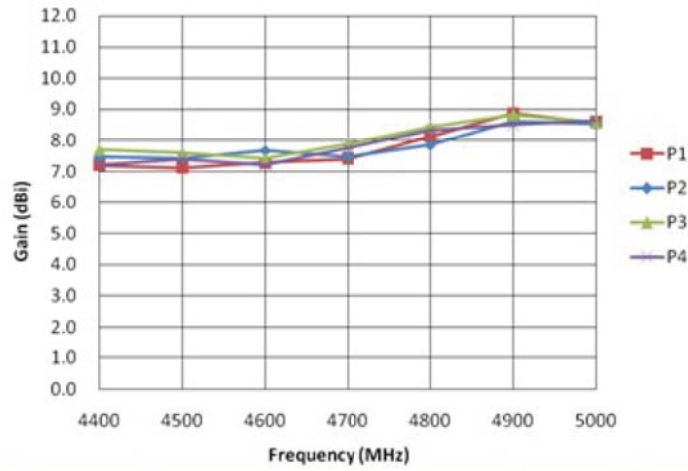


2.2 Pattern

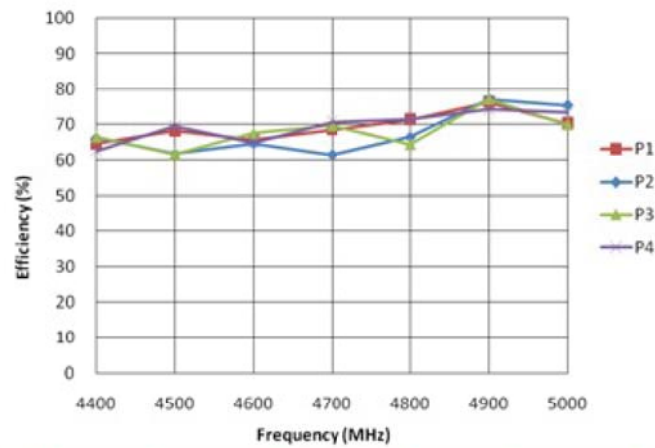
Port 4



2.3 Gain and Efficiency



Frequency (MHz)	4400	4500	4600	4700	4800	4900	5000
Port 1 (dBi)	7.19	7.11	7.28	7.4	8.12	8.86	8.56
Port 2 (dBi)	7.47	7.42	7.67	7.47	7.85	8.60	8.53
Port 3 (dBi)	7.70	7.60	7.41	7.88	8.43	8.82	8.59
Port 4 (dBi)	7.21	7.40	7.21	7.75	8.33	8.50	8.63



Frequency (MHz)	4400	4500	4600	4700	4800	4900	5000
Port 1 (dBi)	64.5	68.2	65.8	68.5	71.3	76.3	70.3
Port 2 (dBi)	66.3	61.8	64.6	61.4	66.4	77.2	75.5
Port 3 (dBi)	66.5	61.7	67.6	69.7	64.4	77.2	70.0
Port 4 (dBi)	62.5	69.4	64.9	70.7	71.4	74.3	73.4