

# SPECIFICATION FOR APPROVAL

**CUSTOMER** \_\_\_\_\_

**DESCRIPTION** **1-3dBi LTE 4G/5G + WiFi Swivel Rubber Antenna**

**PART NO.** **MEW86-S-6985850**

**DATE** \_\_\_\_\_

<b>DESIGNER</b>		<b>DIRECTOR</b>	
-----------------	--	-----------------	--

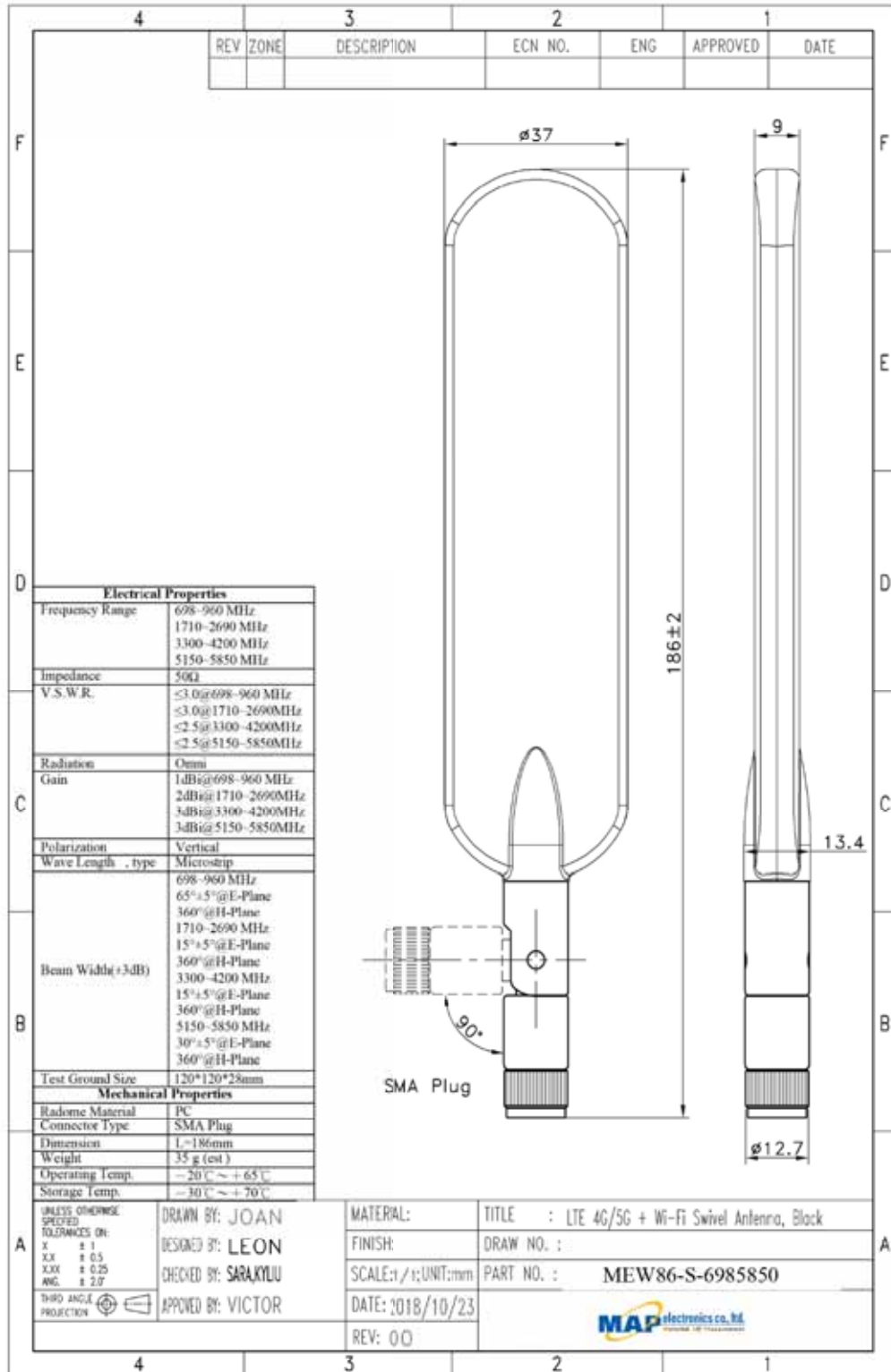
**Approved by Customer/date:**

\_\_\_\_\_



# ANTENNA SPECIFICATIONS FOR APPROVAL

**7 DRAWING**



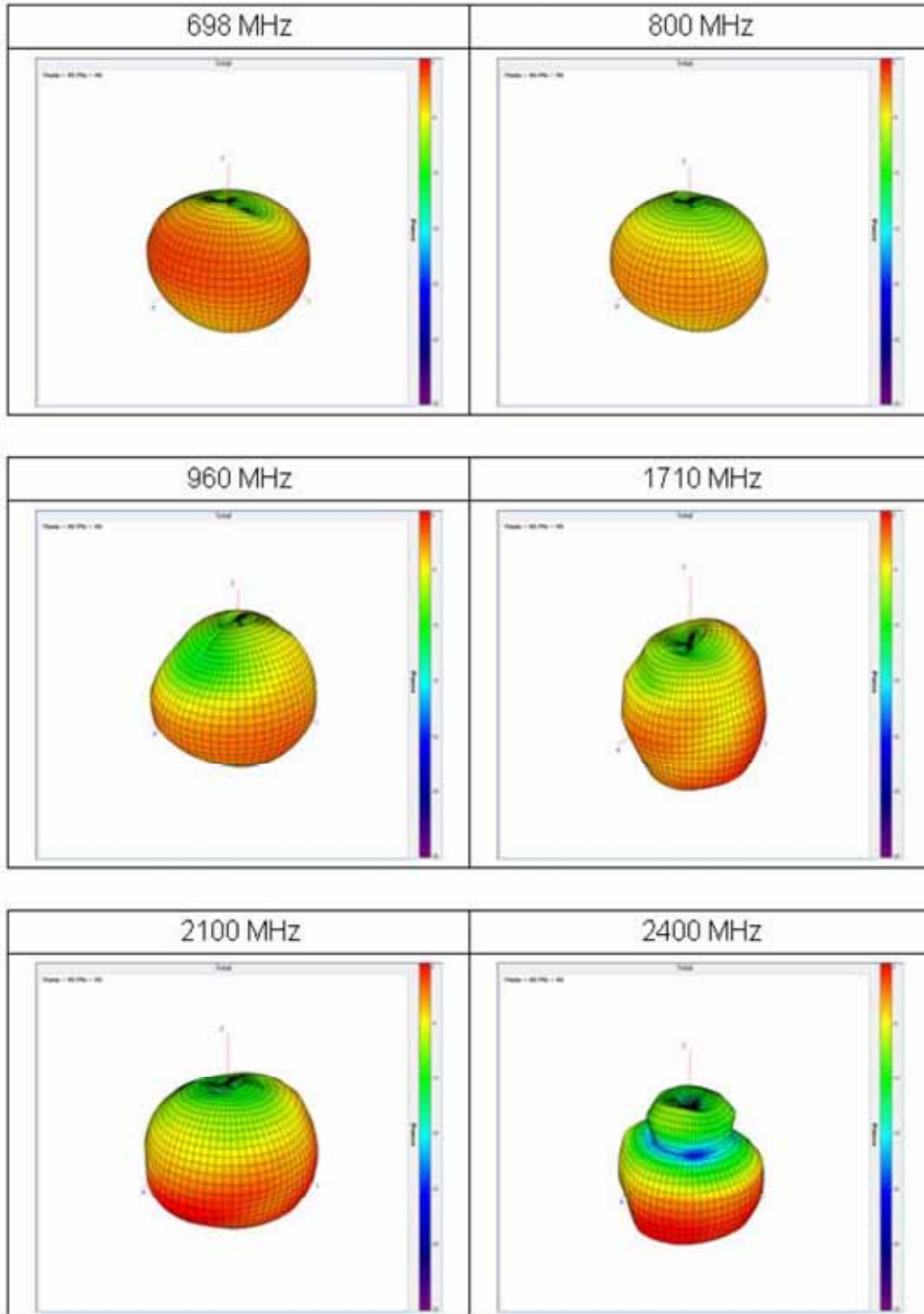
# ANTENNA SPECIFICATIONS FOR APPROVAL

## 8 TEST- VSWR

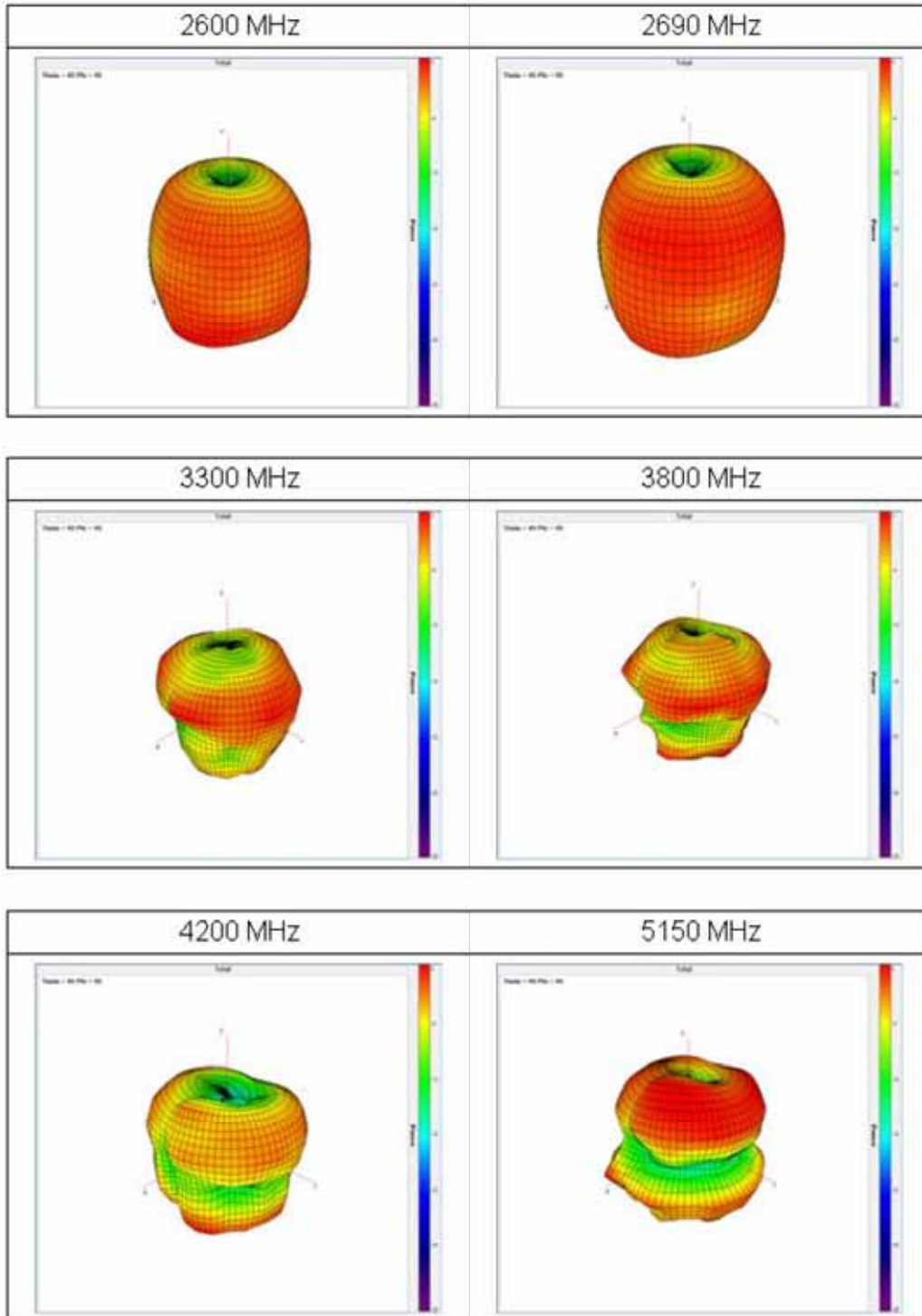


# ANTENNA SPECIFICATIONS FOR APPROVAL

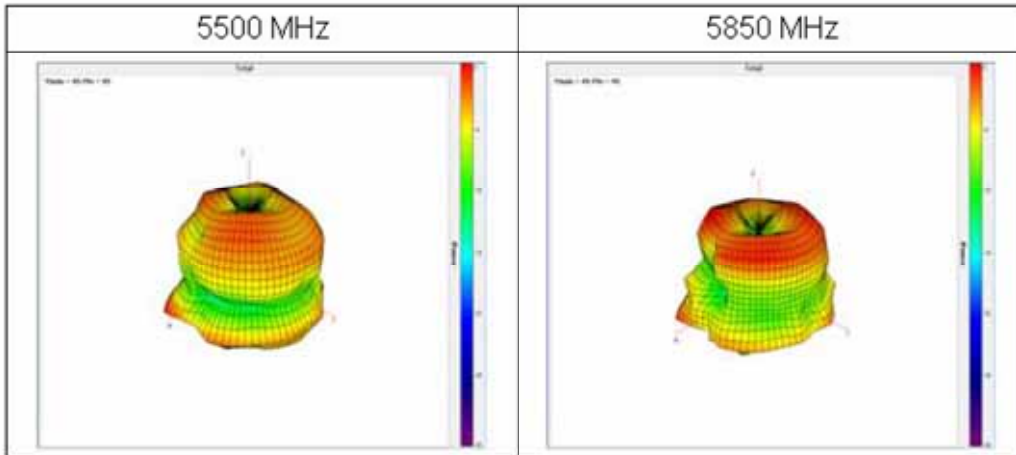
## 9 3D radiation pattern



# ANTENNA SPECIFICATIONS FOR APPROVAL



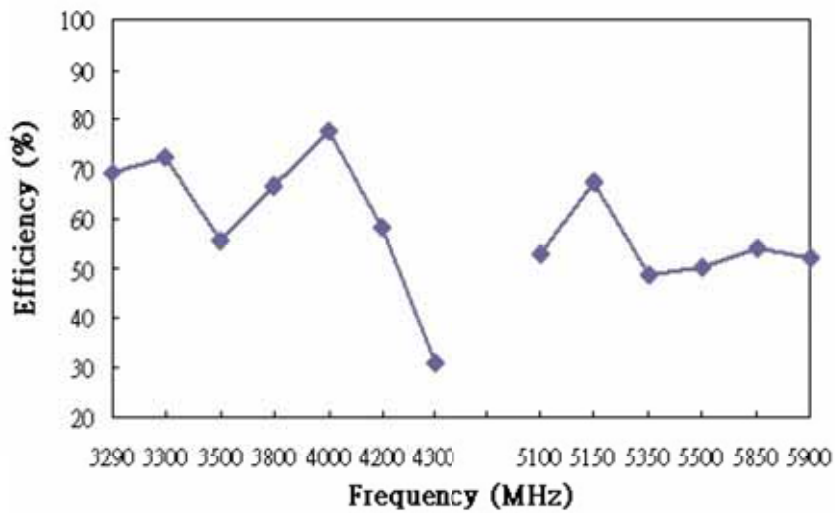
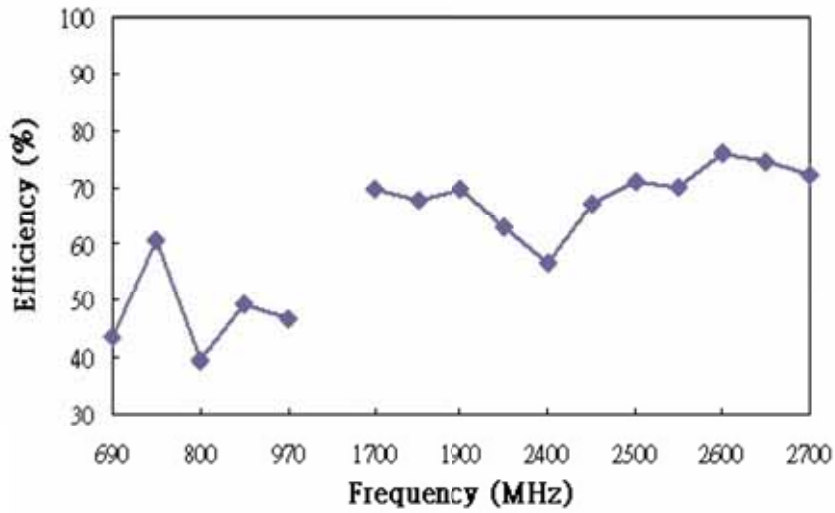
# ANTENNA SPECIFICATIONS FOR APPROVAL





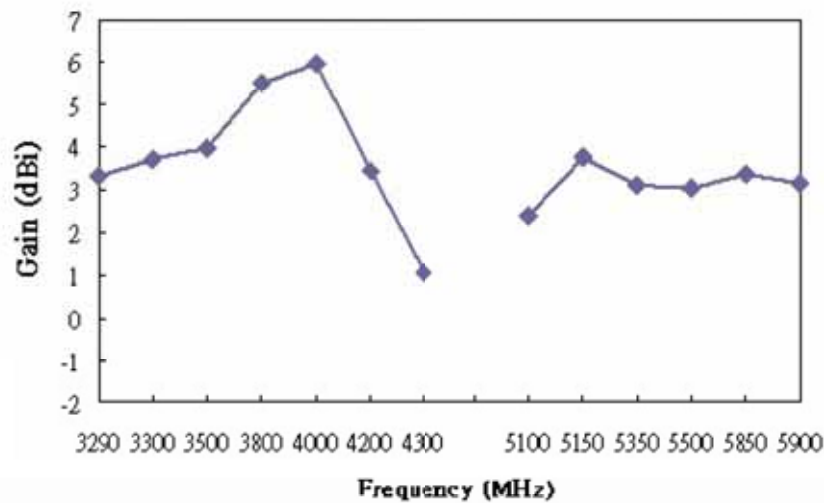
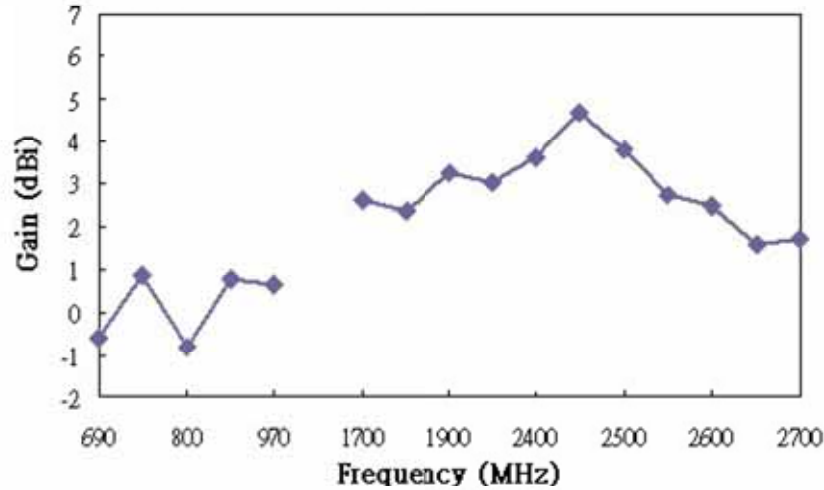
# ANTENNA SPECIFICATIONS FOR APPROVAL

## 10 Gain and Efficiency





## ANTENNA SPECIFICATIONS FOR APPROVAL



Frequency (MHz)	690	698	800	960	970	1700	1710	1900	2100	2400	2450	2500	2550	2600
Gain (dBi)	-0.6	0.86	-0.8	0.77	0.65	2.61	2.37	3.24	3.03	3.61	4.69	3.8	2.74	2.46
Efficiency (%)	43.38	60.72	39.64	49.38	46.94	69.46	67.5	69.82	62.97	56.9	66.86	70.92	69.98	76.02

Frequency (MHz)	2690	2700	3290	3300	3500	3800	4000	4200	4300	5100	5150	5350	5500	5850
Gain (dBi)	1.59	1.73	3.34	3.72	3.99	5.52	5.96	3.46	1.09	2.39	3.74	3.11	3.02	3.38
Efficiency (%)	74.54	72.26	69.15	72.19	55.52	66.37	77.26	58.14	30.9	52.76	67.16	48.8	50.06	54.03