

承認書

APPROVAL SHEET

CUSTOMER: MAP ELECTRONICS CO.,LTD

CUSTOMER MODEL NO.: MECX-SAZOULA1H0010-XX

DESCRIPTION: Cable Assembly

REV.: 01

DATE 2016/11/14

Customer Approval

Map Electronics Co., Ltd.
116-14 Kosato Ueda-City
Nagano 3860005 Japan
TEL:+81-268-28-7576 FAX:+81-268-28-7577
E-mail:sales@mapele.co.jp
URL:http://www.mapele.co.jp



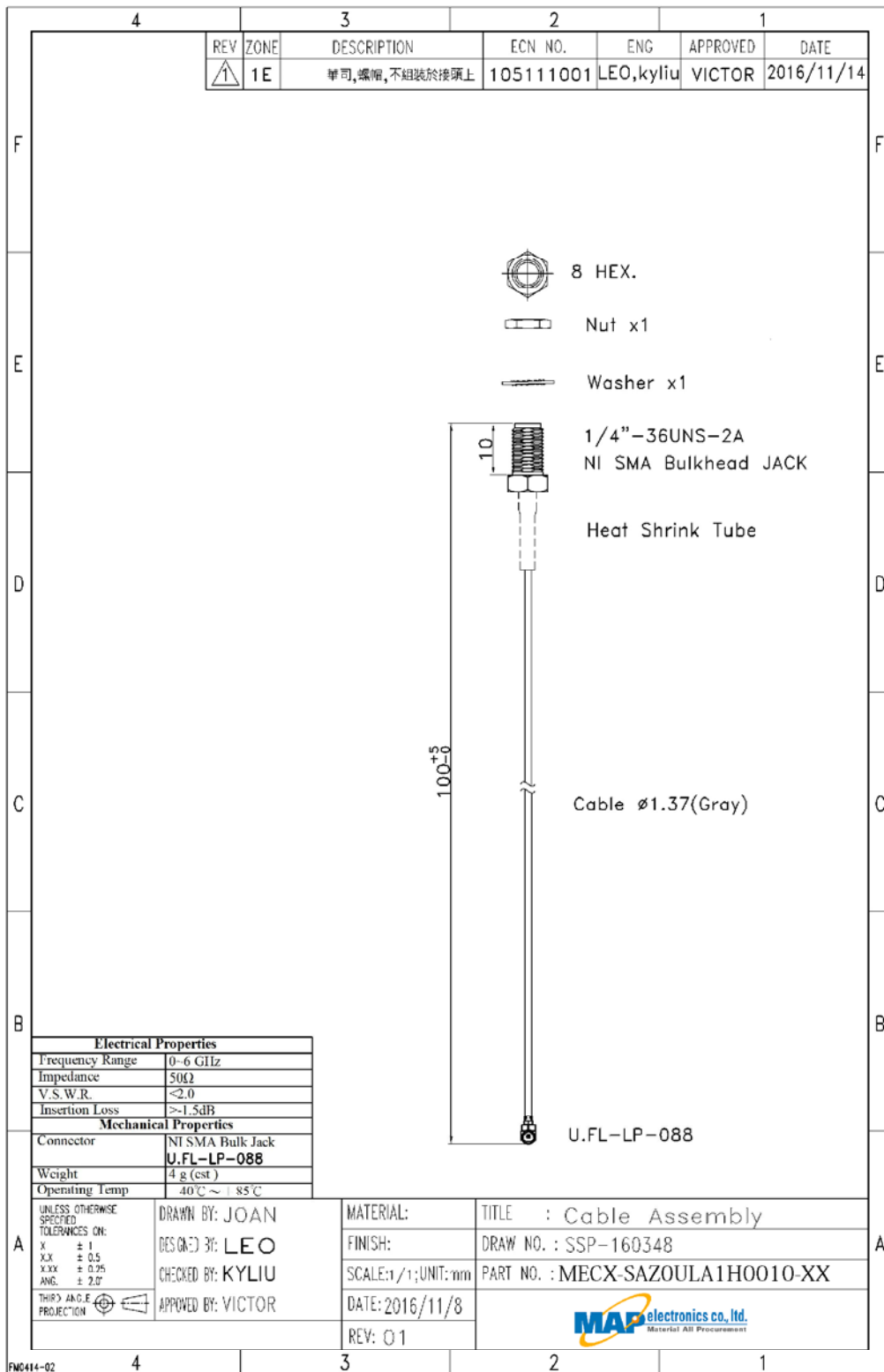
Index.

Item	
1. Specification	2
· Drawing	2
· Connector	4
· Cable	5
.....	
2. Test report	6
· Electrical test	6
.....	
3. PACKING	7
.....	

Modification History:

Rev.	Date	Content
00	2016/11/14	





Map Electronics Co., Ltd.

116-14 Kosato Ueda-City

Nagano 3860005 Japan

TEL:+81-268-28-7576 FAX:+81-268-28-7577

E-mail:sales@mapele.co.jp

URL:http://www.mapele.co.jp

Electrical Properties	
Frequency Range	0~6 GHz
Impedance	50Ω
V.S.W.R.	≤2.0
Insertion Loss	≥-1.5dB
Mechanical Properties	
Connector	SMA Bulk Jack U.FL-LP-088
Weight	4 g (est)
Operating Temp	-40°C ~ +85°C

Connector**SMA**

Specification Data	1) Impedance	50 ohm
	2) Frequency Range	0~6 GHz
	3) V.S.W.R.	≤ 1.5
	4) Working Voltage	≤ 250 Vrms
	5) Dielectric Withstanding	≤ 670 Vrms
	6) Voltage Insulation Resistance	≥ 2000 Mega ohm
	7) Contact Resistance	Center contact: 3.0 Milliohms (Max.) Outer contact: 2.0 Milliohms (Max.)
	8) Recommended coupling nut torque	4.0~8.8 in. lbs (0.45~0.99Nm)
	9) Coupling nut retention force	≥ 50 lbs (222N)
	10) Contact captivation force	≥ 5 lbs (22.2N)
	11) Durability (mating)	≥ 500 cycles

Environmental Data	1) Operating Temperature	$-65^{\circ}\text{C} \sim +165^{\circ}\text{C}$
	2) Thermal Shock	MIL-STD-202,Method 107, Condition B
	3) Corrosion	MIL-STD-202,Method 101, Condition B
	4) Shock	MIL-STD-202,Method 213, Condition I
	5) Vibration	MIL-STD-202,Method 204, Condition D
	6) Moisture Resistance	MIL-STD-202,Method 106

Material Specifications	Material Data	Material
	1) Body	Brass
	2) Contact	Brass
	3) Insulator	Teflon or Delrin



Map Electronics Co., Ltd.

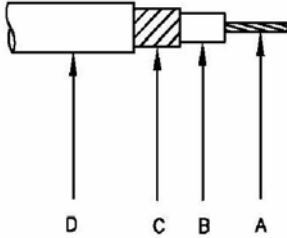
116-14 Kosato Ueda-City

Nagano 3860005 Japan

TEL:+81-268-28-7576 FAX:+81-268-28-7577

E-mail:sales@mapele.co.jp

URL:http://www.mapele.co.jp

**Scope:**

This specification presents a FEP jacketed COAXIAL cable AWG30, 1.37 mm O.D. for internal wiring of electronic equipment, such as Computer/Notebook with wireless communication systems.

Construction:

- A) Inner Conductor:
Silver Plated Copper
OD 0.304mm
- B) Dielectric:
Extruded PTEE
OD 0.89
- C) Outer Conductor:
Silver Plated Copper
OD 1.11mm
- D) Outer Jacket:
Extruded FEP
OD 1.37±0.1mm

Electricals:

Impedance: 50 ± 2 Ohms
Inner Conductor Resistance @20°C: 349 nom. Ω/km
Capacitance: 96.5 pF/m nom

Attenuation:

100MHz	44.78 dB/100m
400MHz	91.83 dB/100m
800MHz	129.33 dB/100m
1GHz	147.33 dB/100m
2GHz	210.04 dB/100m
3GHz	263.41 dB/100m
4GHz	315.53 dB/100m
5GHz	359.44 dB/100m
6GHz	389.42 dB/100m

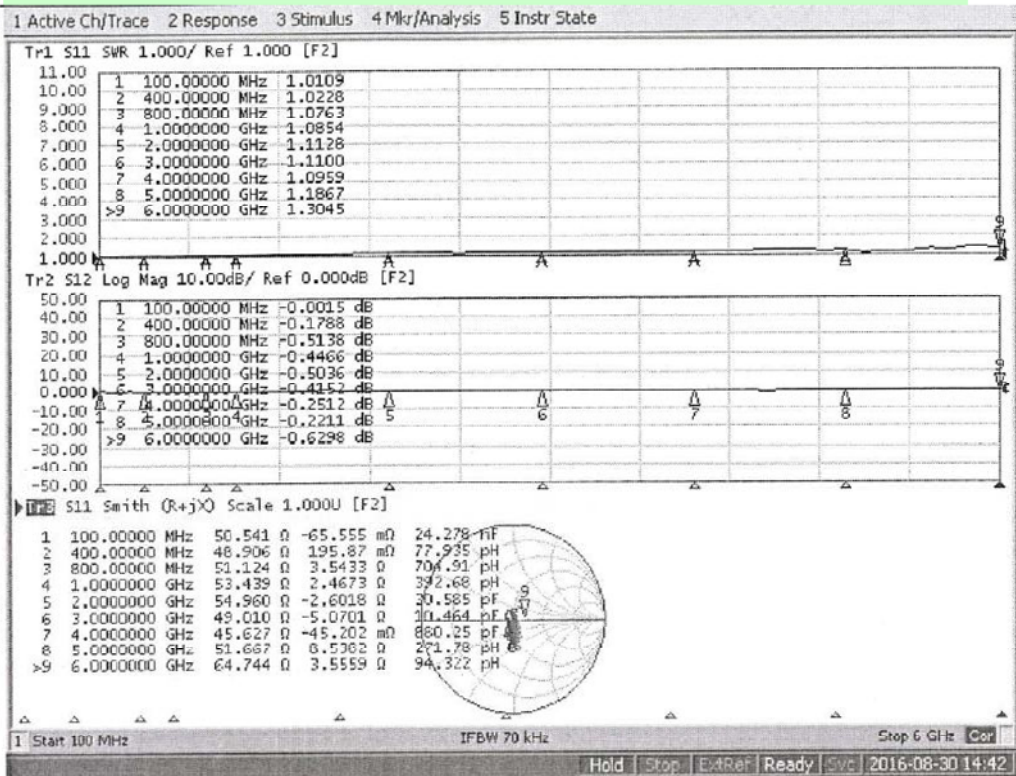
2. Test Report

Model NO. MECX-SAZOULA1H0010-XX

2.1 Electrical test

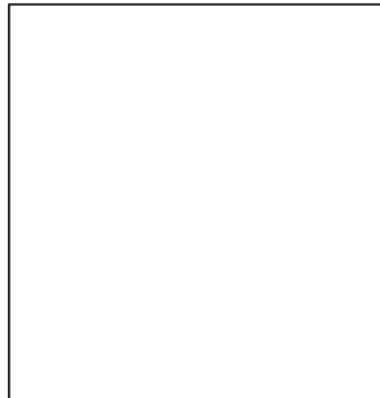
Insertion Loss/V.S.W.R

Insertion Loss



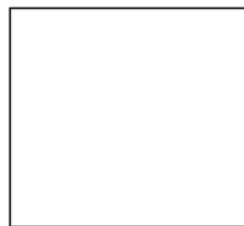
V.S.W.R.





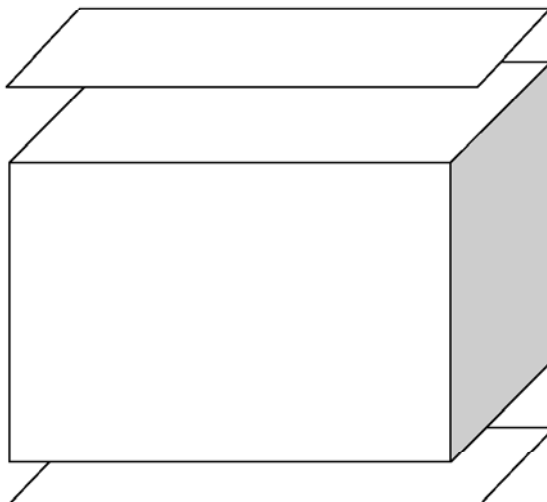
1

50PCS CABLE ASS'Y /1 PE
PE size 16.5*30 cm



2

100PCS Washer, Nut /3 Zip bag
Zip bag size 100*70 cm



3

1000PCS ANT./1 Bubble Partition
/2PCS
Carton size 320*250*290 mm
Bubble Partition size 31*250 mm