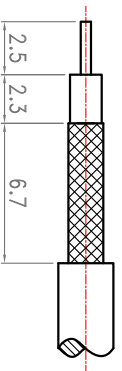
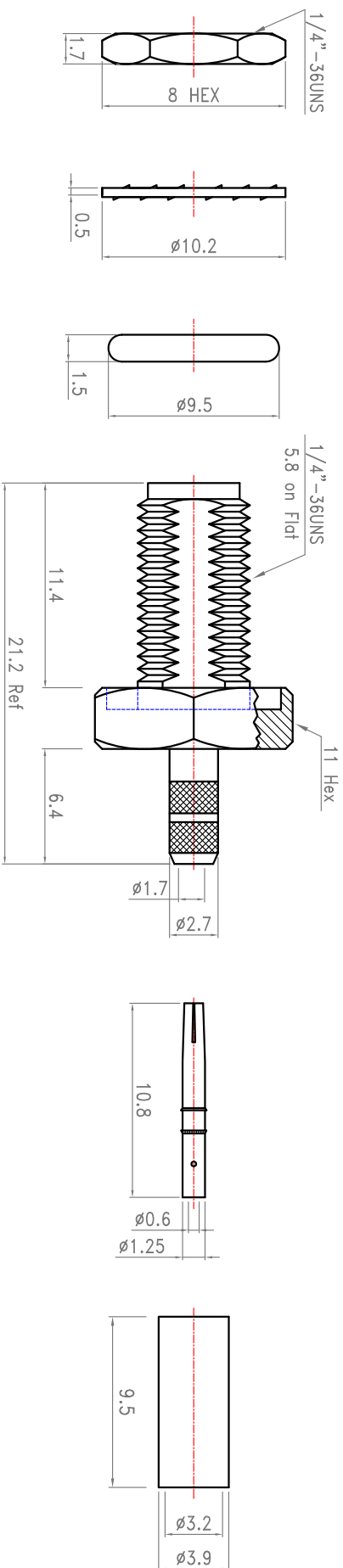


Revisions

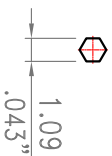
ISS	Symbol	Description	Date
B		CHE for New Drawing Frame & New PN System	2006/07/11

Outline Drawing

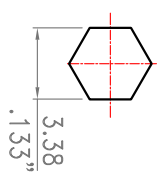
Note :
1. Recommended Crimped Hand Tool : for Center Pin P/N - HT-801G for Ferrule P/N - HT-H116N



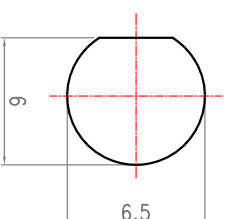
Recommended Stripping Dimensions



Recommended Crimped Dimensions for Center Pin



Recommended Crimped Dimensions for Ferrule



Recommended Mounting Hole

ROHS COMPLIANCE

ITEM	Description	Material	Finish	Part Number	QTY
7	Nut	Brass	Gold		
6	Washer	Brass	Gold		
5	O-Ring	Si-Rubber	Red		
4	Ferrule	Brass	Gold		
3	Pin	BeCu	30u"Gold		
2	Insulator	PTFE	None		
1	Body	Brass	Gold		

Scale	Abbr.	Date	Rev.
NTS	ST	2011/04/28	B

DWG. NO.	TITLE
W50110004	SMA Bulkhead Dual Crimp Jack for RG174;188;316;B7805A,URM95 Cable

Drawn	Checked	Approved
<i>Mark</i>	<i>Ryoon</i>	<i>G. Yun</i>

Proprietary Note
This document contains information proprietary to MAP, which is either copyrighted, or patent applied for, and / or protected by trade secret laws.
This document or parts thereof, may not be used disclosed or reproduced in any form by any method, or for any purpose, without the written permission of MAP, Japan.

MAP electronics co., Ltd.
Material All Procurement

Scale	Abbr.	Date	Rev.
NTS	ST	2011/04/28	B

Drawn	Checked	Approved
<i>Mark</i>	<i>Ryoon</i>	<i>G. Yun</i>

Customer P/N: