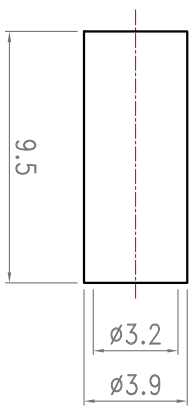
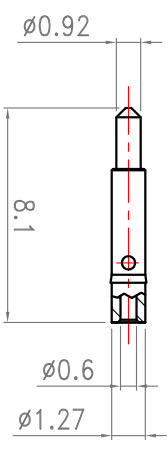
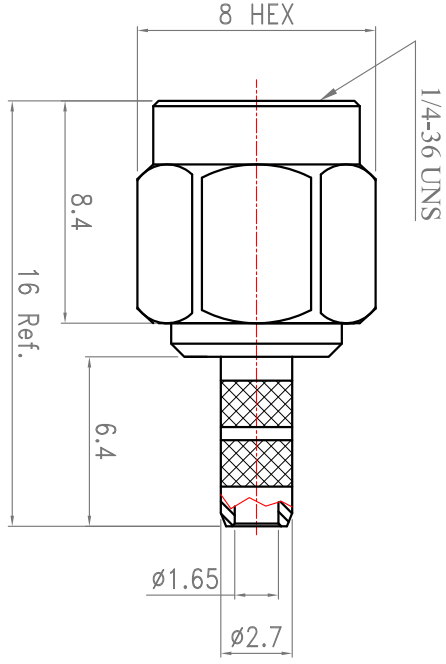


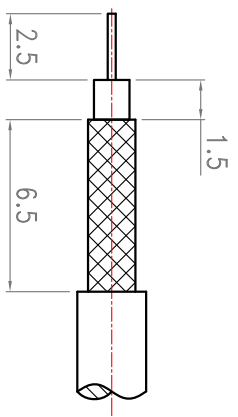
Revisions

ISS	Symbol	Description	Date
B		CHE for New Drawing Frame & New PN System	2006/07/11

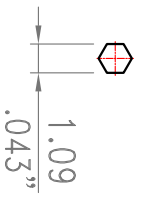
Note :
 1. Recommended Crimped Hand Tool : for Center Pin P/N - **HT-801G**
 for Ferrule P/N - **HT-H116N**



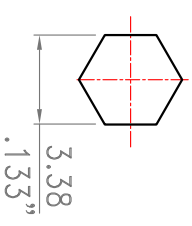
Recommended Cable Stripping Dimensions



Recommended Crimped Dimensions for Center Pin



Recommended Crimped Dimensions for Ferrule



ROHS COMPLIANCE

ITEM	Description	Material	Finish	Part Number	QTY
6					
5	Ferrule	Brass	Gold		
4	Pin	Brass	30u"Gold		
3	Insulator	PTFE	None		
2	Body	Brass	Gold		
1	Shell	Brass	Gold		

Scale	Abbr.	Date	Rev.	DWG. NO.
NTS	ST	2011/04/28	B	W50110001

Tolerances :
 .X ±0.2
 .XX ±0.1
 .XXX±0.05

All Dimensions in mm (Unless Otherwise Specified)

Drawn: *Mark* Checked: *Ryoun* Approved: *G. Yun*

Mark 2011/04/28 Ryoun 2011/04/28 G. Yun 2011/04/28

Customer P/N:

TITLE SMA Straight Dual Crimp Plug for RG174;188;316,B7805A,URM95 Cable

Material All Procurement