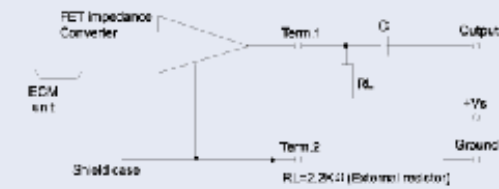




SENSITIVITY	靈 敏 度
SENSITIVITY REDUCTION	靈敏度減
FREQUENCY	頻 率
MAX. WORKING VOLTAGE	最大工作電壓
CURRENT CONSUMPTION	電流消耗
S/N RATIO	信 噪 比
STORAGE TEMPERATURE	儲存溫度
WEIGHT	重 量

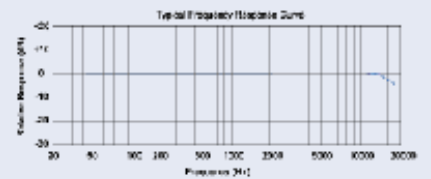
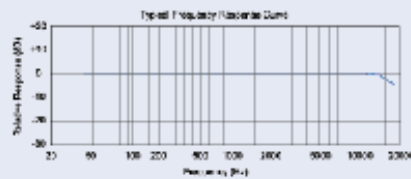
Schematic Diagram 測定電路圖



Dimensions (Unit: mm ± 0.2) 尺 寸 圖



Typical Frequency Response Curve 頻 率 響應 圖



FEATURES

- Omnidirectional type
- Low voltage 1.5V operation is suitable for all telephones, intercoms and computers applications

特 色

- 全指向性
- 低電壓1.5V操作，適用於各種電話、對講機及電腦產品

OBO-54LN-0B

Vs=2.0V, RL=2.2KΩ

- -38 ± 3dB
- -40 ± 3dB
- -42 ± 3dB
- -44 ± 3dB

F=1KHz 0dB=1V/Pa

Within -3dB at 1.5V compare to 3.0V

50~18,000Hz

Max. 10V

Max. 0.5mA

More than 60dB

-25°C to +70°C

Max. 0.7gm

OBO-54LP-0B