

承認書

APPROVAL SHEET

CUSTOMER: MAP ELECTRONICS CO., LTD

CUSTOMER MODEL NO.: MEIWX-2411RSXX-2400

DESCRIPTION

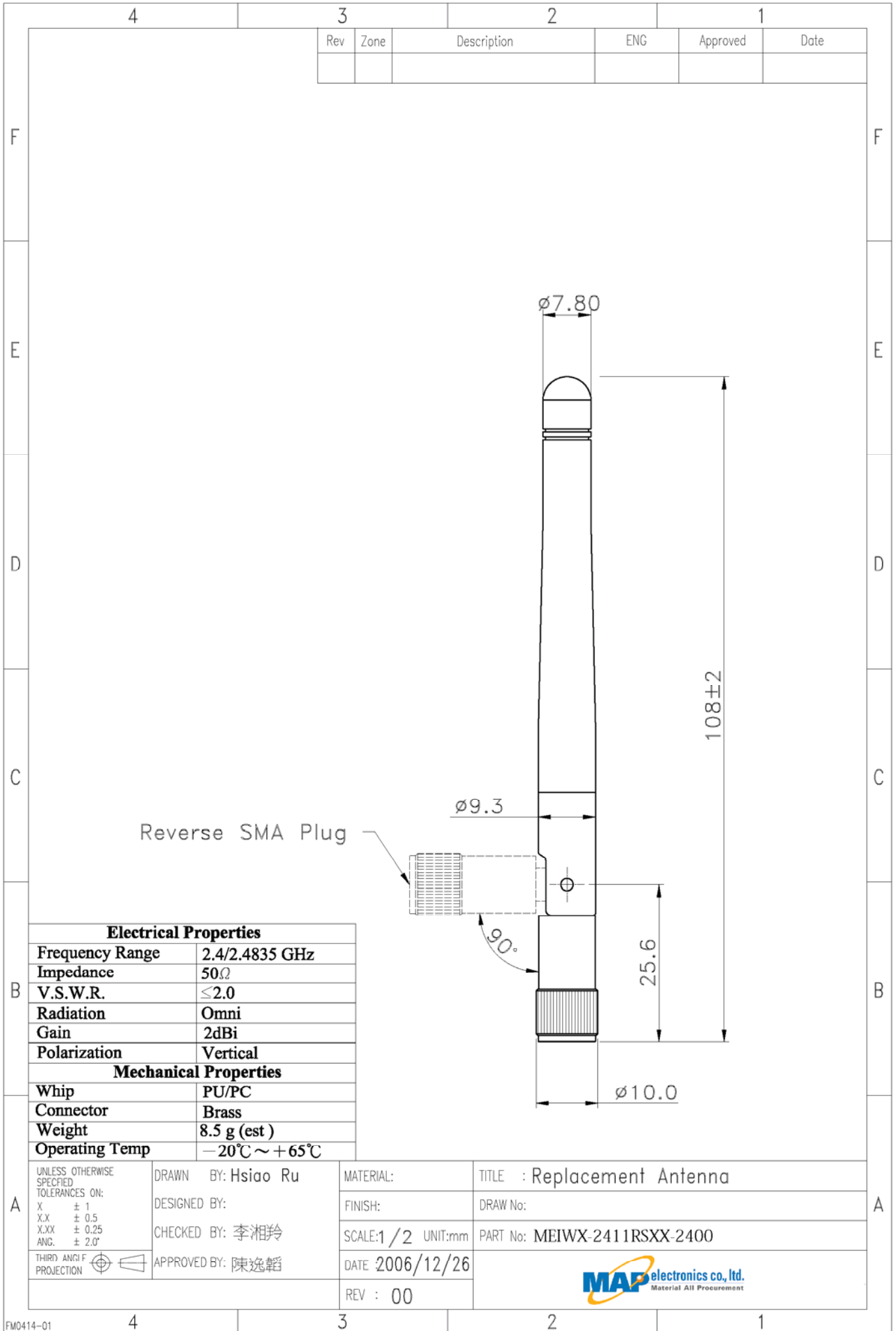
REV.: 00

DATE

Customer Approval	
-------------------	--



for reference only



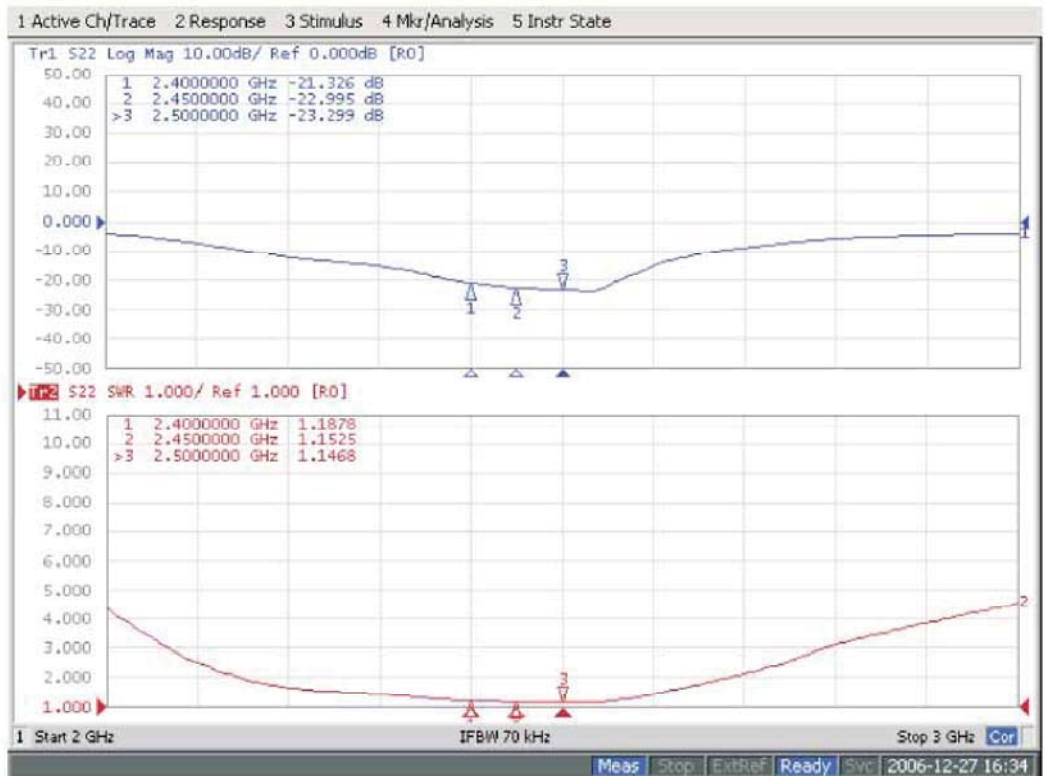
for reference only

Model. MEIWX-2411RSXX-2400

Test Report

Electrical Test

Return loss

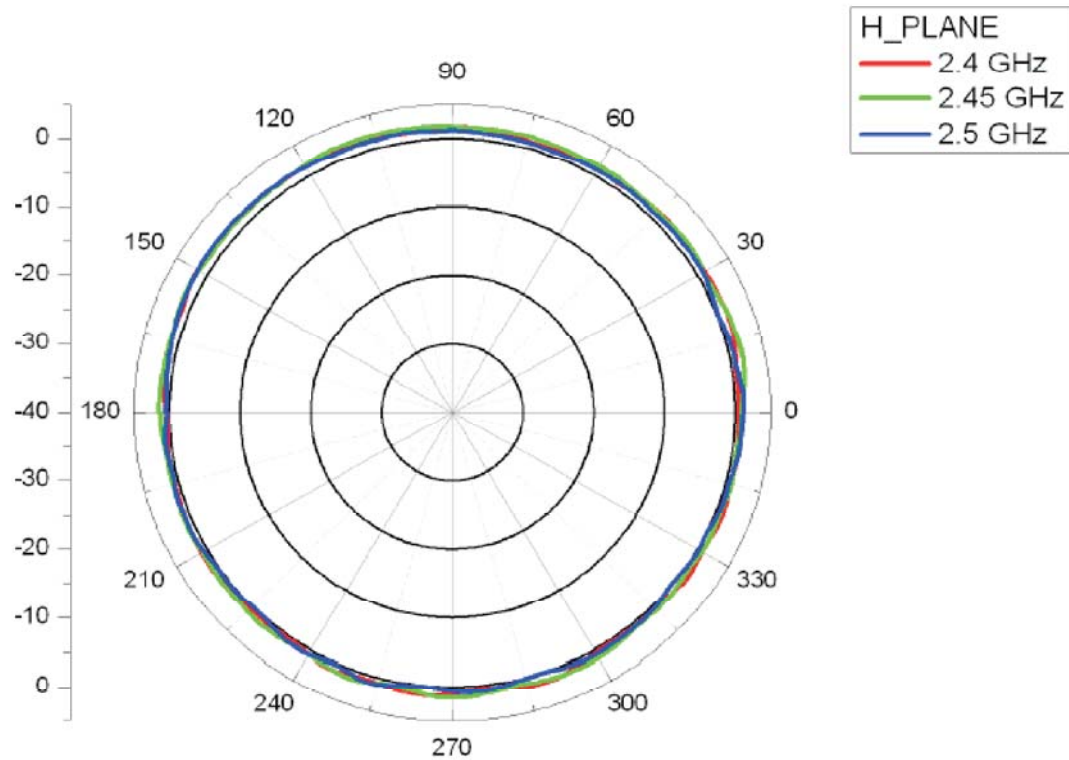
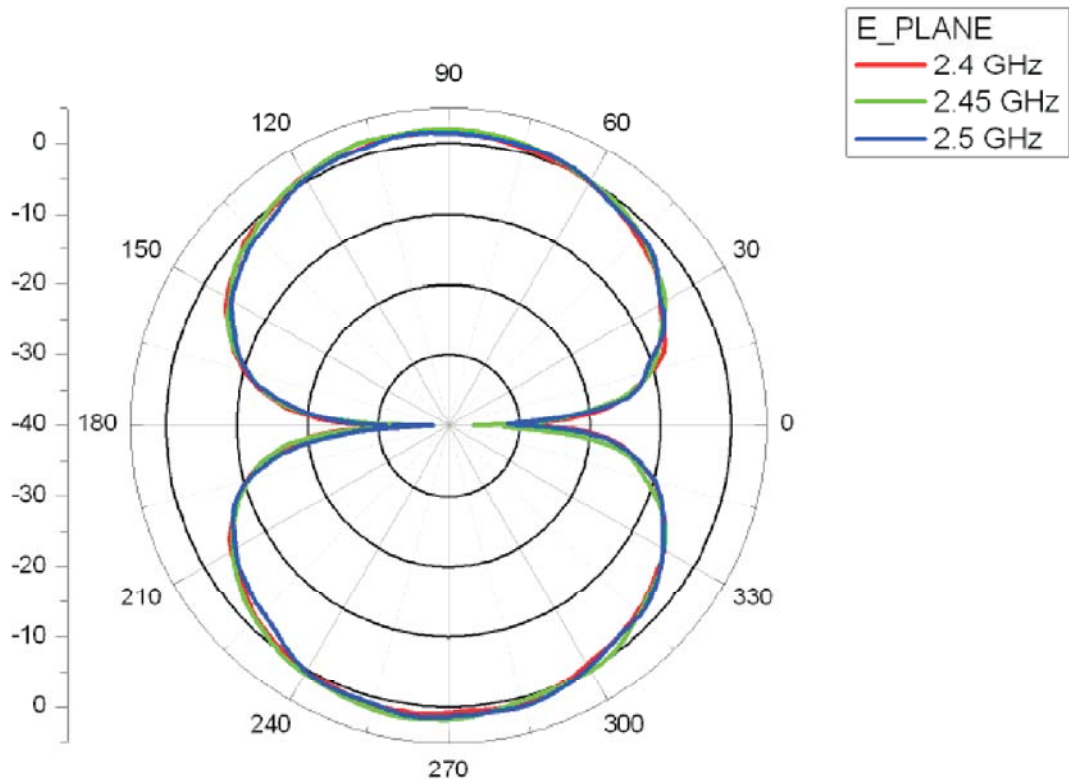


V.S.W.R.

Model. MEIWX-2411RSXX-2400

Test Report

Pattern Test



Connector**Reverse SMA Plug**

This is a reverse SMA plug join on the antenna.

Electrical Properties	1) Impedance	50 ohm
	2) Frequency Range	0~6 GHz
	3) V.S.W.R.	1.5 (Max.)
	4) Working Voltage	≤250 Vrms
	5) Dielectric Withstanding	≤670 Vrms
	6) Voltage Insulation Resistance	≥2000Megohm
	7) Contact Resistance	Center contact: 3.0 Milliohm (Max.) Outer contact: 2.0 Milliohm (Max.)
	8) Insertion Loss(2.4GHz)	0.3 dB

Mechanical Properties	1) Recommended coupling nut torque	4.0 in.lbs.~8.8 in.lbs.
	2) Coupling nut retention force	≥50 lbs.
	3) Contact captivation axial	≥5 lbs.

Environmental Ratings	1) Operating Temperature	-65°C ~ +165°C
	2) Thermal Shock	MIL-STD-202, Method 107, Condition B
	3) Corrosion	MIL-STD-202, Method 101, Condition B
	4) Shock	MIL-STD-202, Method 213, Condition I
	5) Vibration	MIL-STD-202, Method 204, Condition D
	6) Moisture Resistance	MIL-STD-202, Method 106

Material Specifications	Material Data	Material	Plating
	1) Body	Brass	Black
	2) Center contact	Phosphor Bronze	Gold
	3) Insulator	Teflon or Delrin	
