

# 承 認 書

## APPROVAL SHEET

CUSTOMER: MAP ELECTRONICS CO., LTD

CUSTOMER MODEL NO.: MEIHX-321XRSXX-2400

DESCRIPTION #321X Replacement Antenna

REV.: 00

DATE 2014/2/14

Customer Approval	
-------------------	--



## Index.

<b>Item</b>
-------------

### 1. Specification

- Drawing
  - Connector
  - Cable
- 

### 2. Test report

- Electrical test
  - Pattern test
- 

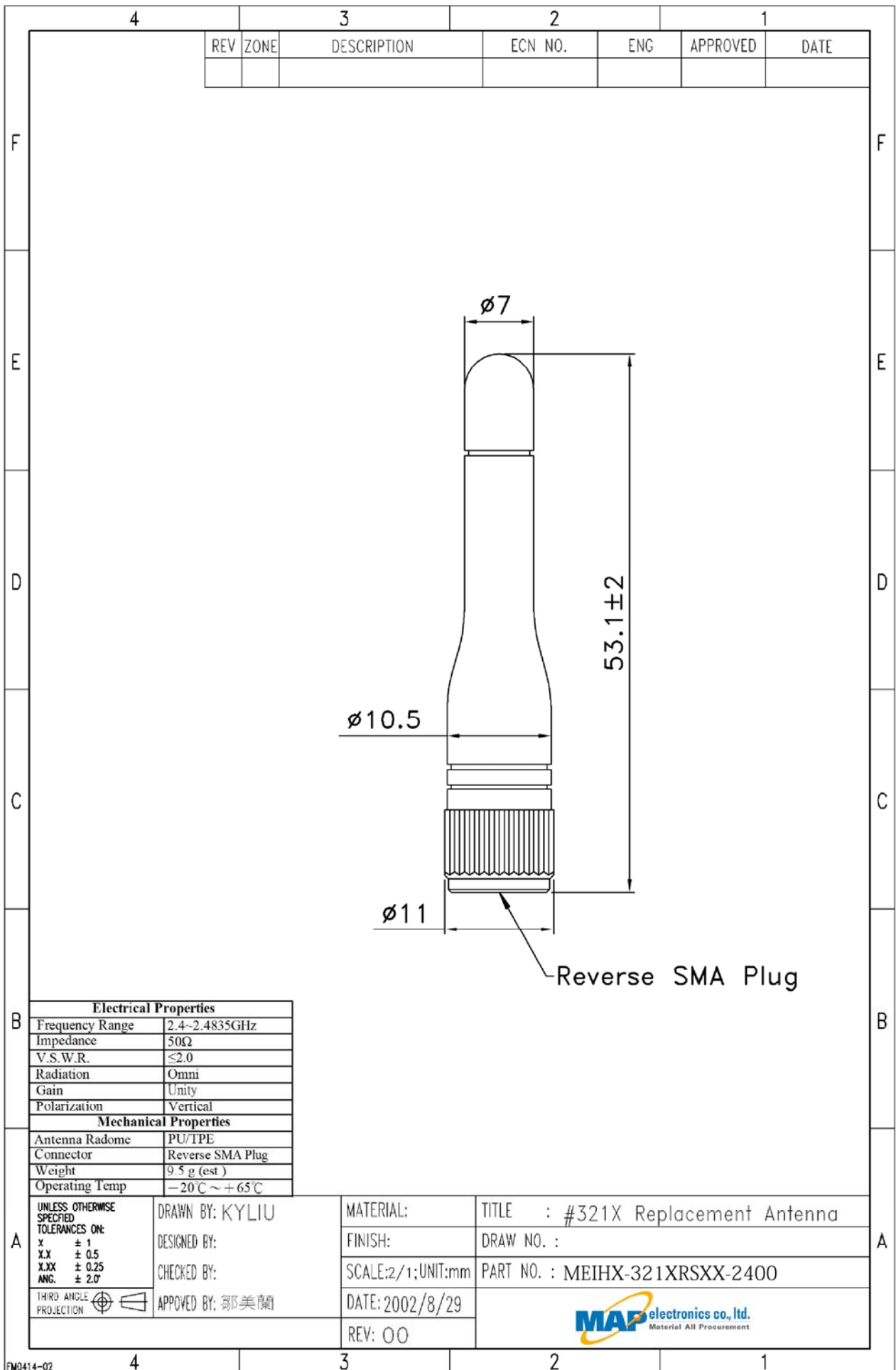
### 3. Packing

- PE Bag
  - Carton
- 

## Modification History:

Rev.	Date	Content
00	2014/2/14	





FM0414-02

---

---

**Connector****SMA**

---

Specification Data	1) Impedance	50 ohm
	2) Frequency Range	0~6GHz
	3) V.S.W.R.	$\leq 1.5$
	4) Working Voltage	$\leq 250$ Vrms
	5) Dielectric Withstanding	$\leq 670$ Vrms
	6) Voltage Insulation Resistance	$\geq 2000$ Mega ohm
	7) Contact Resistance	Center contact: 3.0 Milliohms (Max.) Outer contact: 2.0 Milliohms (Max.)
	8) Recommended coupling nut torque	4.0~8.8 in. lbs (0.45~0.99Nm)
	9) Coupling nut retention force	$\geq 50$ lbs (222N)
	10) Contact captivation force	$\geq 5$ lbs (22.2N)
	11) Durability (mating)	$\geq 500$ cycles

---

Environmental Data	1) Operating Temperature	$-65^{\circ}\text{C} \sim +165^{\circ}\text{C}$
	2) Thermal Shock	MIL-STD-202,Method 107, Condition E
	3) Corrosion	MIL-STD-202,Method 101, Condition E
	4) Shock	MIL-STD-202,Method 213, Condition I
	5) Vibration	MIL-STD-202,Method 204, Condition I
	6) Moisture Resistance	MIL-STD-202,Method 106

---

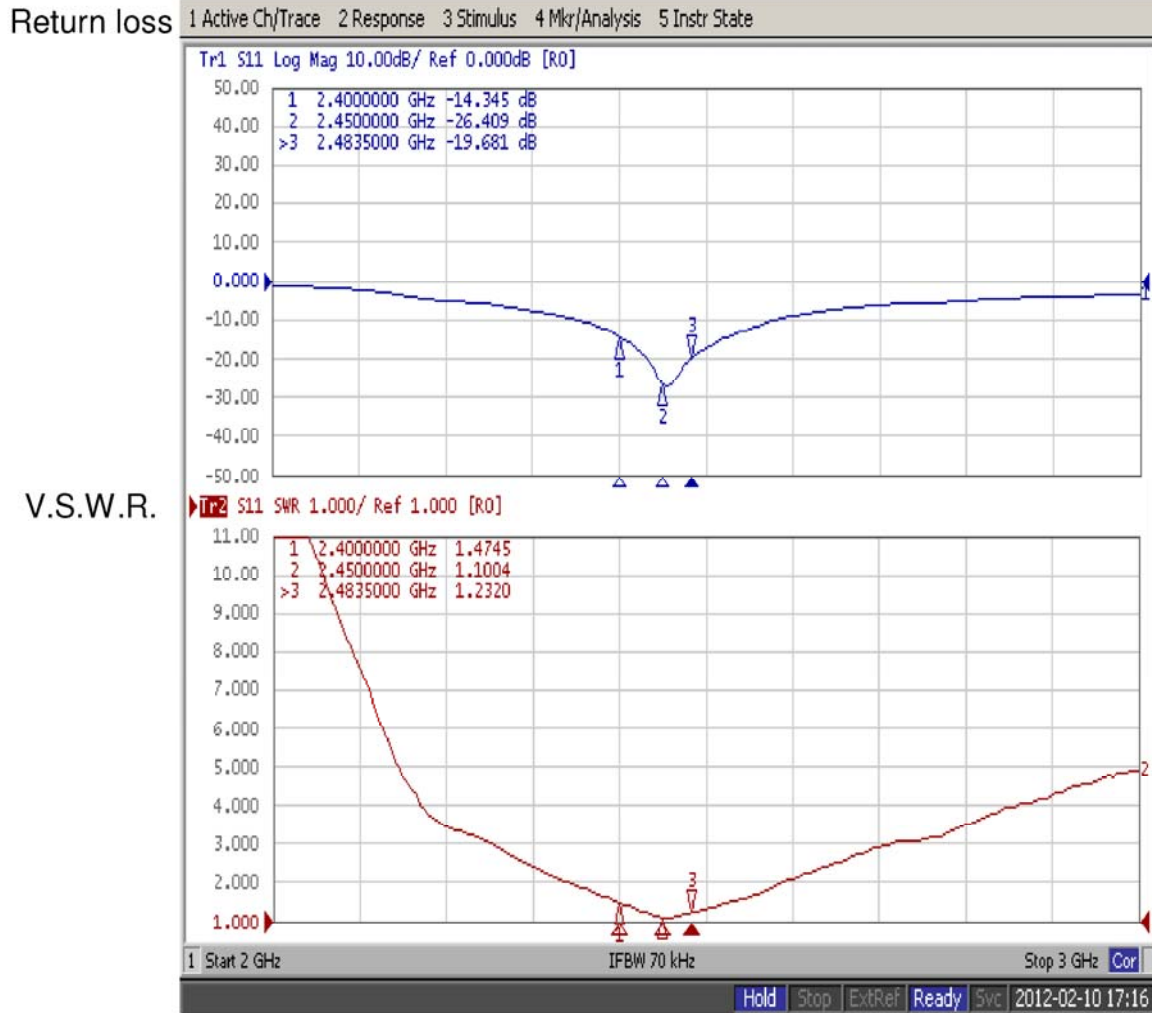
Material Specifications	Material Data	Material
	1) Body	Brass
	2) Contact	Brass
	3) Insulator	Teflon or Delrin

---

**Model.** MEIHX-321XRSXX-2400

**Test Report**

**Return loss/V.S.W.R**



---

---

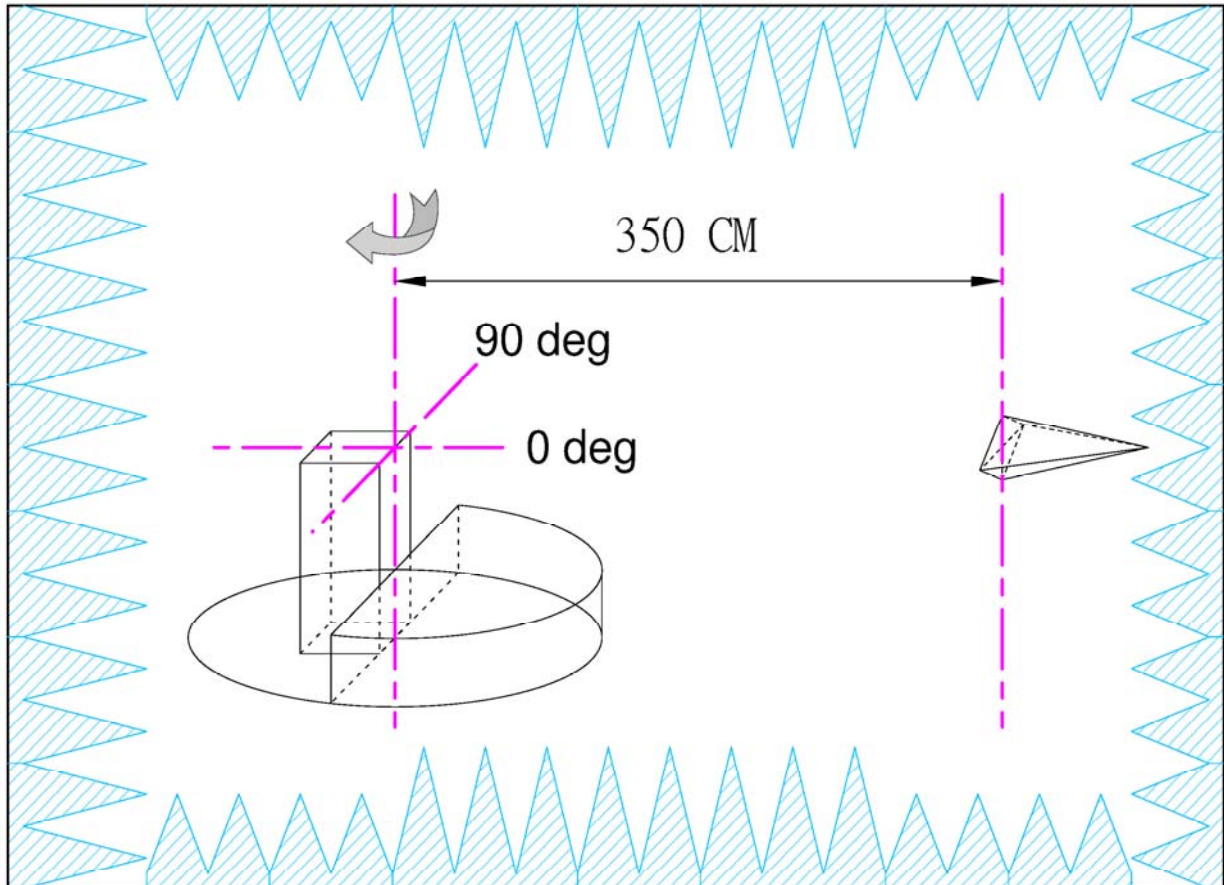
**Model.** MEIHX-321XRSXX-2400

**2D Patten Test Instrument**

**Pattern Test**

---

---



### Test Equipment

Anechoic chamber: 100MHz~6GHz 8\*6\*6m (※ 1m Quiet zone at 800MHz)

Source Antenna: ETS-3164 Dual Polarized Horn

Network Analyzer: Agilent E5071B 100kHz~8.5GHz

---

---

**Model.** MEIHX-321XRSXX-2400

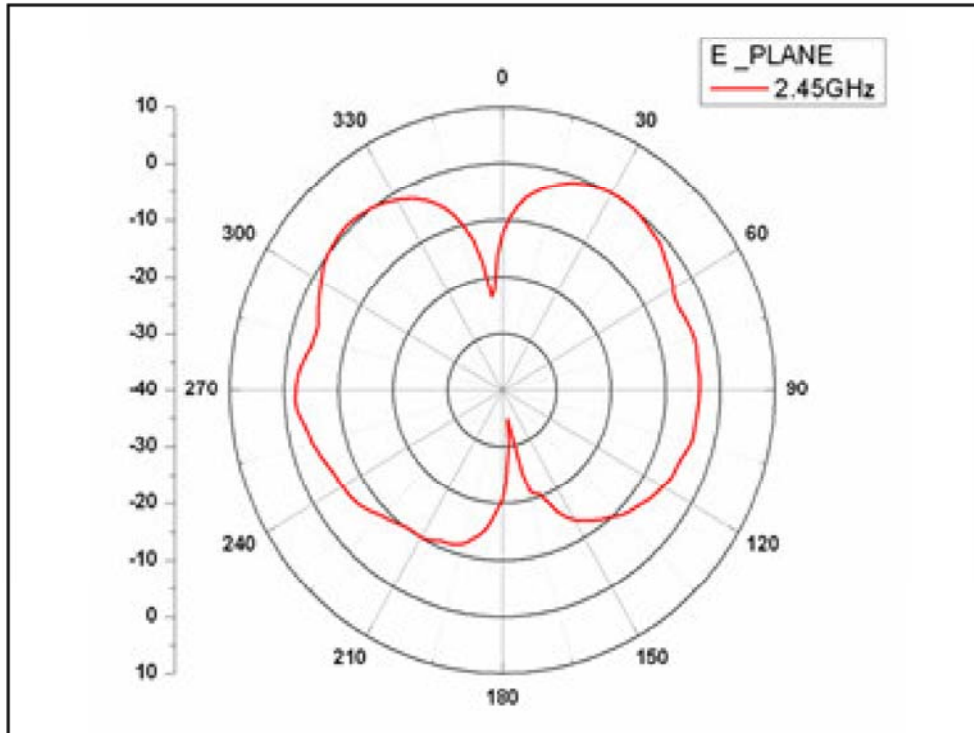
**Test Setup**

**Pattern Test**

---

---

**E-plane**



**H-plane**

