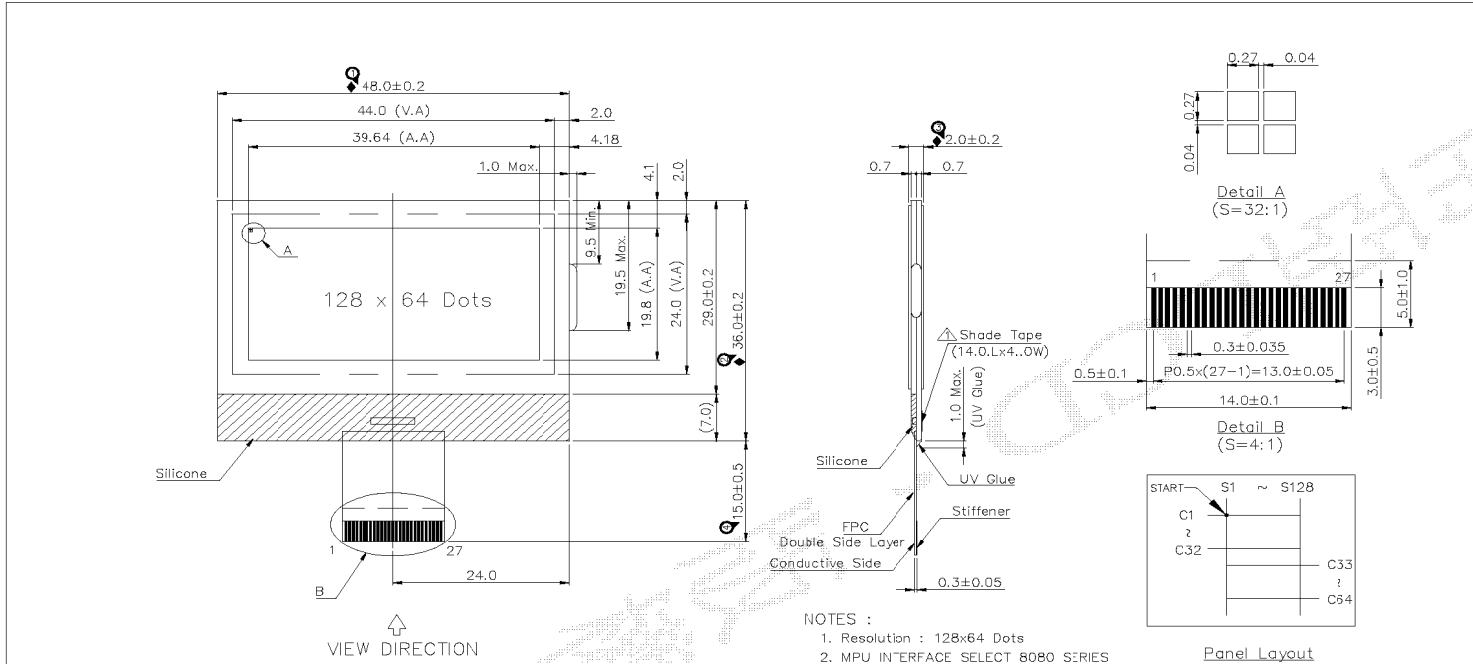


10. OUTLINE DRAWING



- NOTES :
- Resolution : 128x64 Dots
 - MPU INTERFACE SELECT 8080 SERIES

GENERAL TOLERANCE LIST

DIMENSION	TOLERANCE
L ≤ 6	±0.25 (mm)
6 < L ≤ 18	±0.3 (mm)
18 < L ≤ 50	±0.4 (mm)
50 < L ≤ 125	±0.5 (mm)
125 < L	±0.6 (mm)
ANGLE	±1° (DEG)

南亞塑膠工業股份有限公司
NAN YA PLASTICS CORPORATION
製品圖
LDA43HF80J2DS

NAME	DATE	THIRD ANGLE P.
APPROVE Tony Cheu	97.11.28	
CHECK Y.C.Liu	97.11.27	
DESIGN R.C.Cheng	97.11.26	
DRAWN R.C.Cheng	97.11.26	

SCALE 2/1 UNIT mm
DWG NO. MF180FD2A

PIN NO	SYMBOL	FUNCTION	PIN NO	SYMBOL	FUNCTION
1	V4	POWER SUPPLY FOR THE LIQUID CRYSTAL DRIVE	15	DB7	DATA BUS
2	V3	POWER SUPPLY FOR THE LIQUID CRYSTAL DRIVE	16	DB6	DATA BUS
3	V2	POWER SUPPLY FOR THE LIQUID CRYSTAL DRIVE	17	DB5	DATA BUS
4	V1	POWER SUPPLY FOR THE LIQUID CRYSTAL DRIVE	18	DB4	DATA BUS
5	V0	POWER SUPPLY FOR THE LIQUID CRYSTAL DRIVE	19	DB3	DATA BUS
6	C2-	CONNECT FOR THE INTERNAL VOLTAGE CONVERTER	20	DB2	DATA BUS
7	C2+	CONNECT FOR THE INTERNAL VOLTAGE CONVERTER	21	DB1	DATA BUS
8	C1-	CONNECT FOR THE INTERNAL VOLTAGE CONVERTER	22	DB0	DATA BUS
9	C1+	CONNECT FOR THE INTERNAL VOLTAGE CONVERTER	23	RD	Read Enable
10	C3-	CONNECT FOR THE INTERNAL VOLTAGE CONVERTER	24	WR	Write Enable
11	C3+	CONNECT FOR THE INTERNAL VOLTAGE CONVERTER	25	RS	REGISTER SELECT INPUT
12	Vout	VOLTAGE CONVERTER OUTPUT	26	RESETB	HARDWARE RESET INPUT
13	VDD	POWER SUPPLY CONNECT TO MPU POWER SUPPLY PIN	27	CS1B	CHP SELECT INPUT
14	VSS	0V (GND)			

REV. NO.	DESCRIPTION	DATE	DESIGN	CHECK	APPROVE
1	Modified the Leng'h of Shade Tape	98.04.01	R.C.Cheng		

REV/DATE	R0/	R2/	審核時間	審核動作	BY
12.08.08'	04.01.09'				J.P Weng