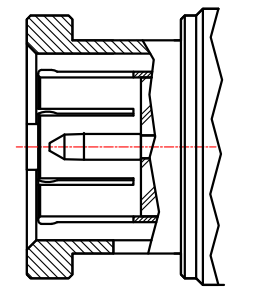
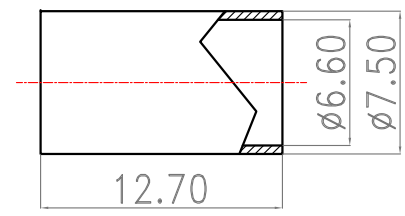
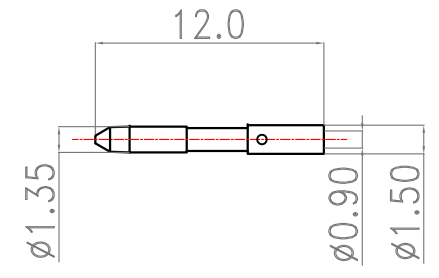
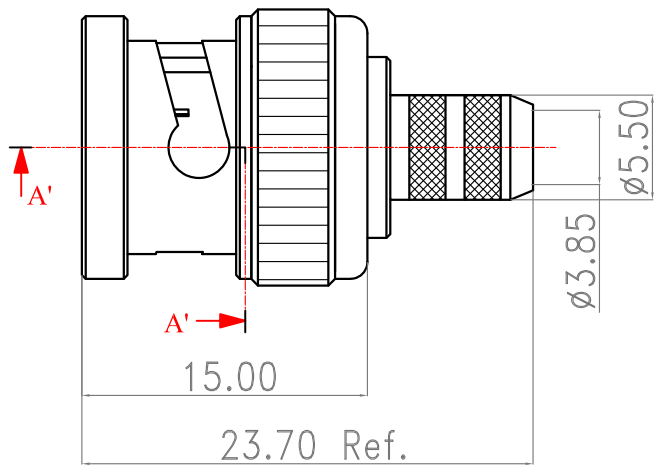


Revisions

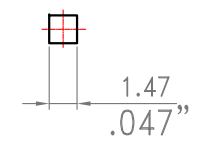
Note: Revisions B; B-1; B-2..... On behalf of official Drawing. Revisions 1; 2; 3; 4..... On behalf of experiment's Drawing.			
ISS	Symbol	Description	Date
B		CHE for New Drawing Frame & New PN System	2006/07/11

Note :

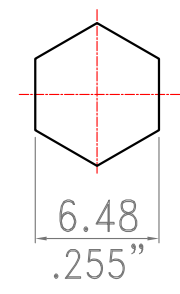
1. Single Crimp: Providing recommended dimensions for ferrule.
Dual Crimp: Providing recommended dimensions for ferrule and center pin.
Please advise Single/Dual in advance to avoid any inconvenience.
2. All metal material is in compliance with RoHs Directive 2002/95/EC Annex 4 (1) Section 6 paragraph.
所有金屬物料皆符合 RoHs 2002/95/EC號指令附件第4 (1) 第6項規定。
3. Recommended Crimped Hand Tool : **HT-301V1**



Section A'-A' 75 ohm



Recommended Crimped Dimensions for Center Pin



Recommended Crimped Dimensions for Ferrule

6						Scale	Abbr.	Date	Rev.	DWG. NO.	TITLE	
5	Ferrule	Brass	Nickel			NTS	ST	2012/02/02	B	HB101P0N01-JJ-R	BNC Straight Dual Crimp Plug for RG59/U 20 AWG Cable (75 ohm)	
4	Pin	Brass	Gold			Tolerances : .X ±0.2 .XX ±0.1 .XXX±0.05				Customer P/N:	 MAP electronics co., Ltd. Material All Procurement	
3	Insulator	PTFE	None			All Dimensions in mm (Unless Otherwise Specified)		Drawn	Checked	Approved		Proprietary Note This document contains information proprietary to MAP, which is either copyrighted, or patent applied for, and / or protected by trade secret laws. This document or parts thereof, may not be used disclosed or reproduced in any form by any method, or for any purpose, without the written permission of MAP, Japan.
2	Body	Brass	Nickel			Mark	Ryan	G. Sun				
1	Shell	Brass	Nickel									
ITEM	Description	Material	Finish	Part Number	QTY	2011/08/09	2011/08/09	2011/08/09				